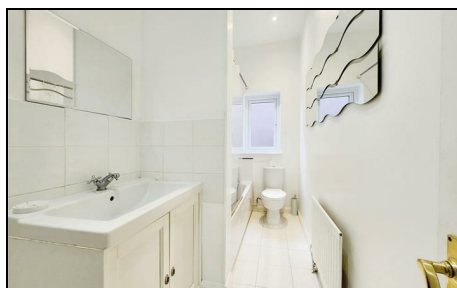
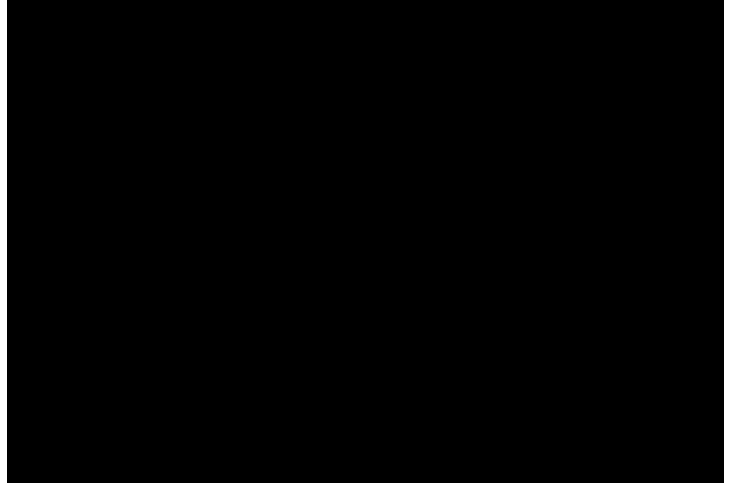


**7 Pepys Road
Raynes Park, SW20 8NJ**

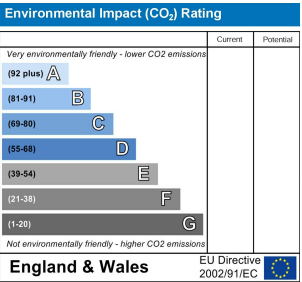
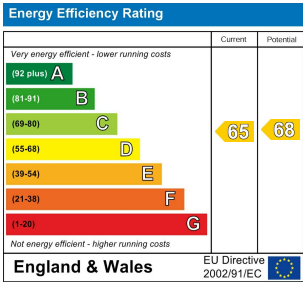
£1,400 PCM



Spacious, first floor floor one bedroom conversion flat with OFF STREET PARKING located in the centre of Raynes Park, just a minutes walk from the train station and close to amenities such as Waitrose and local restaurants. Consists of a good size reception room and double bedroom, and separate kitchen. EPC band D. Council tax band C.



- Spacious rooms
- Off street parking
- One minute walk to Raynes Park station
- Close to shops & restaurants
- Gas central heating
- First months rent in advance
- Five weeks security deposit
- Holding deposit = one months rent
- EPC band D
- Council tax band C



Although these particulars are believed to be correct, their accuracy is not guaranteed and they do not form part of any contract.

Celebrating 30 years of successful Sales and Lettings in Merton

